

# ZINTA

---



arper

# Zinta

Graphic, lightweight and fluid, Zinta is a modular sofa system defined by the harmonious juxtaposition of smooth lines and warm materials. Its deep seat perfectly supports the casual recline of the body. Its system of variable lengths and gentle angles allows it to weave through a space with subtle dexterity. It can serve as simple, single sofa or large-scale organizing principle in an open space.

Zinta is comprised of wood shell lined in pads for contract or cushions for a more accommodating seat in a select group of fabrics. Diverse sizes, materials and fill allow for diverse combinations and applications. Shells are available in oak-effect veneered plywood in the natural, brown and dark brown shades and in white laminate and natural oak laminate. Steel base and aluminum legs are painted in dark grey color. Optional plywood armrests are available. Diverse lengths and angles allow for endless combinations.

arper



## Designer

Lievore Altherr Molina, 2014

Lievore Altherr Molina was founded by Alberto Lievore, Jeannette Altherr and Manel Molina in 1990. Their humanist design approach is informed by the fundamental desire for pure, beautiful forms derived from the constraints of function, technology and context. Distinguished by a multi-disciplinary method that engages furniture, interior, product, and package design, their work has been globally exhibited and acknowledged. They are the recipients the prestigious National Design Award (1999) in Spain where they practice and teach extensively.

## Applications

- Home
- Canteen
- Cafeteria
- Restaurant
- Campus
- Library
- Board room
- Conference room
- Break-out area
- Waiting room

## Awards

ADI Design Index 2015, Italy

# Zinta

arper



T +39 0422 7918 F +39 0422 791800

[www.arper.com](http://www.arper.com)



1

**1 Hotel Hall**  
 Art. 4409, 4404, 4402 Lounge  
 Art. 3000, 3001, 3002 Pix

**2 Lounge Area**  
 Art. 4500 Waiting  
 Art. 5100, 5102 Parentesit

**3 Igualada Leather Clúster**  
**BCN Headquarters**  
 Igualada, Spain  
 Art. 4425, 4424 Lounge  
 Art. 3800 Ply  
 Art. 4104, 4102, 4101 Cushions

arper



2



3





1

**1 Igualada Leather Clúster**  
**BCN Headquarters,**  
**Igualada, Spain**  
Art. 4425, 4422, 4419 Lounge  
Art. 3800 Ply  
Art. 4104, 4102, 4101 Cushions

2 Art. 3001

**3 Private residence**  
**Barcelona, Spain**  
Art. 4421 Longe  
Art. 4104, 4100 Cushions

2



3



- 1 Restaurant**  
Art. 4601 Eating  
Art. 2074 Catifa 53
- 2 Arper Showroom**  
New York, USA  
Art. 4601 Eating  
Art. 3910 Aava  
Art. 0694 Dizzie  
Art. 4100 Cushion



1



2

# Type

# Zinta



1



2



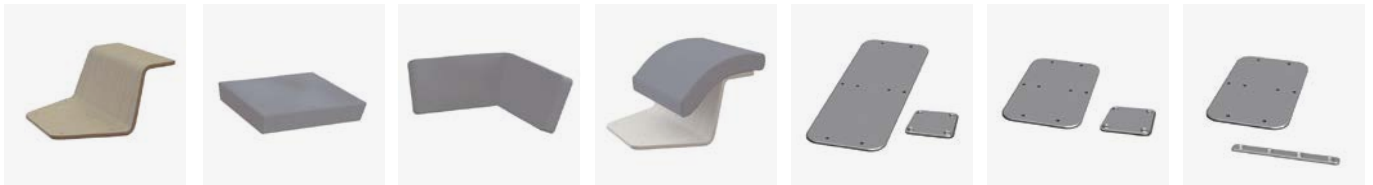
3

## Type

- 1 Lounge
- 2 Waiting
- 3 Eating

arper

## Accessories



1

2

3

4

5

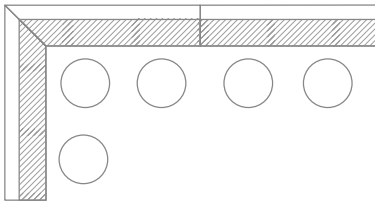
6

7

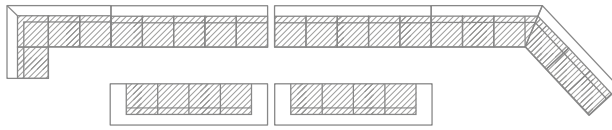
## Accessories

- 1 Armrest (Lounge)
- 2 Seat cushion angle 90° (Lounge)
- 3 Backrest cushion angle 90° (Lounge)
- 4 Armrest cushion (Lounge)
- 5 Link kit for modules Lounge (one kit for two modules)
- 6 Link kit for modules Waiting
- 7 Link kit for modules Eating

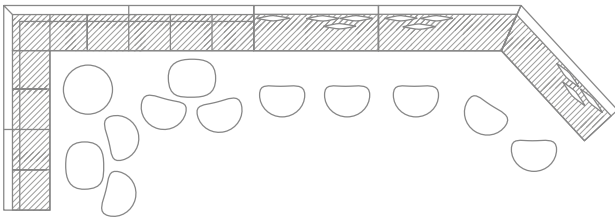
## Composition Examples



1 Eating



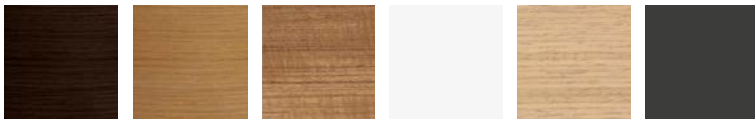
2 Waiting



3 Lounge

arper

## Finishes



L0006

L0022

L0023

LM1

LM22

V44

### Finishes of seat

L0006 Black  
L0022 — Wood - Natural oak  
L0023 — Teak effect  
LM1 — White  
LM22 — Oak effect

### Base Finishes

V44 — Matt Anthracite  
powder-coated



---

**Carded In**

Flexibility and versatility are values which we express through a broad range of customization options made available at the design stage. Each product collection can be upholstered with any of the finishes included in our catalog: an extensive choice of different solutions that can be adapted to the needs of any project. We provide samples, tests and certifications, to support our customers throughout the decision process.

**kvadrat**

Availability: Worldwide  
www.kvadrat.dk



Availability: Worldwide  
www.fidivi.com

**Ultrafabrics.**

Availability: USA  
www.ultrafabricsllc.com



Availability: Worldwide  
www.elmoleather.com



Availability: Worldwide  
www.spradlingvinyl.com

**maharam**

Availability: USA  
www.maharam.com

**Soft leather**

Availability: Worldwide

---

**Graded In**

The customization options become virtually limitless thanks to the collaboration of internationally renowned partners. Each product collection available in our catalog can now be upholstered with any of the selected upholsteries offered by the manufacturers who have included their fabric and leather products in our collections. Nearly 100 upholstery collections available make countless combinations possible in terms of fabrics, colors, technical specifications and prices.

**kvadrat**

Availability: Worldwide  
www.kvadrat.dk

**Gabriel\***

Availability: Worldwide  
www.gabriel.dk

**svensson**

Availability: Worldwide  
www.ludvigsvensson.com



Availability: Worldwide  
www.climatex.com

**Serge Ferrari**

Availability: Worldwide  
www.en.sergeferrari.com

**maharam**

Availability: USA  
www.maharam.com

**camira**

Availability: Worldwide  
www.camirafabrics.com



Availability: Worldwide  
www.winter-creation.com

**DESIGN  
TEX**

Availability: USA  
www.designtex.com



Availability: Worldwide  
www.fidivi.com



Availability: Worldwide  
www.spradling.eu